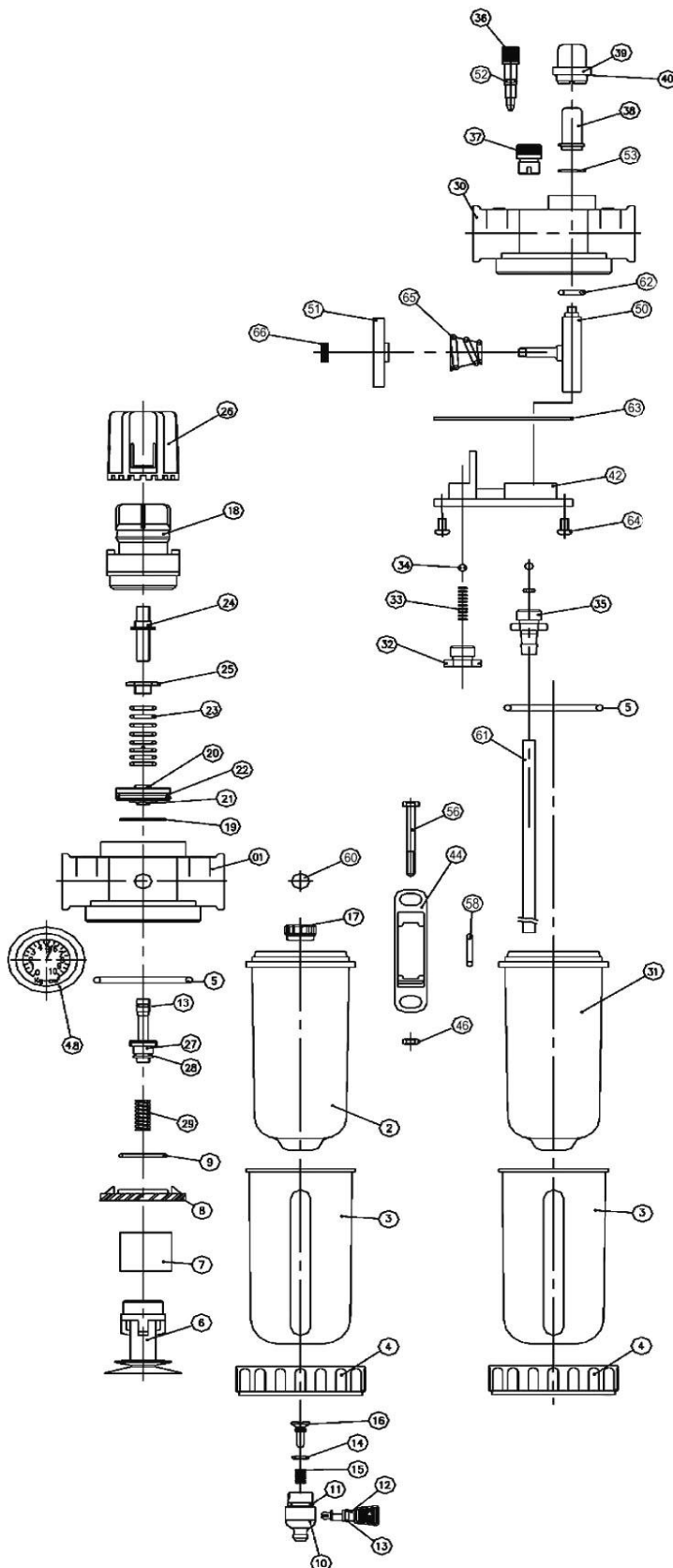


SA-2324

1/2" AIR FILTER, REGULATOR & LUBRICATOR

PARTS LIST



No.	Parts No.	Description	Q'ty
1	c25223-01	Body	1
2	c25228-02	Bowl	1
3	c25228-03	Shatterguard	2
4	c25228-04	Fixed Ring	2
5	c25228-05	O Ring	2
6	c25228-06	Bowl Baffle	1
7	c25228-07	Filter Element	1
8	c25228-08	Interceptor	1
9	c25228-09	O Ring	1
10	c25228-10	Body	1
11	c25228-11	O Ring	1
12	c25228-12	Valve	1
13	c25228-13	O Ring	2
14	c25228-14	O Ring	1
15	c25228-15	Spring	1
16	c25228-16	Piston	1
17	c25228-17	Nut	1
18	c25228-18	Dome	1
19	c25228-19	O Ring	1
20	c25228-20	Piston	1
21	c25228-21	O Ring	1
22	c25228-22	V Ring	1
23	c25228-23	Spring	1
24	c25228-24	Adjusting Screw	1
25	c25228-25	Nut	1
26	c25228-26	Knob	1
27	c25228-27	Valve	1
28	c25228-28	O Ring	1
29	c25228-29	Spring	1
30	C22223-30	Body	1
31	c22228-31	Bowl	1
32	c22228-32	Nut	1
33	c22228-33	Spring	1
34	c22228-34	Ball	1
35	c22228-35	Plug	1
36	c22228-36	Adjusting Screw	1
37	c22228-37	Fill Plug	1
38	c22228-38	Inside Cup	1
39	c22228-39	Outside Cup	1
40	c22228-40	O Ring	1
42	SA2322-42	Mounting	1
44	SA2322-44	Joiner	1
46	SA2322-46	Nut	1
48	c25228-48	Gauge	1
50	c22228-67	Frisket	1
51	c22228-56	Adjusting Ring	1
52	c22228-58	O Ring	1
53	c22228-60	O Ring	1
56	SA2322-56	O Ring	1
58	SA2322-58	Screw (M3x0.5Px12L)	1
60	c22228-63	Spring	1
61	c22228-50	Tube	1
62	c22228-64	O Ring	1
63	c22228-68	Gasket	1
64	c22228-62	Screw	2
65	c22228-63	Spring	1
66	c22228-66	Screw	1